

Pets at Christmas

Merry
Christmas
from Oggi*

Christmas is a magical time of the year but many of the things that we enjoy can be dangerous for our pets.



What are the dangers to our pets at Christmas?

Some festive foods are poisonous to pets and can lead to sickness, stomach problems and weight gain.

These foods should NEVER be given to pets:

- Chocolate
- Mince pies and Christmas pudding
- Rich and fatty foods like cakes and roast potatoes
- Some nuts like macadamia nuts

Never hang chocolate decorations or leave gifts containing food underneath your Christmas tree.

Contact a vet as quickly as possible if you think your pet has eaten something they shouldn't have.



Tinsel and fairy lights

Sparkly decorations are tempting for pets to play with and chew but they can get tangled up in them and lights can cause burns.

Make sure your tree is secure and that you turn off any Christmas lights when you leave the room.



Plants

Christmas trees have sharp, toxic pine needles that can cause stomach upsets and cuts to pets' paws and mouths.

Popular festive plants like poinsettias are also poisonous and must be kept out of reach.



Presents

Wrapping paper might look like a fun toy to our pets, but if eaten it can cause stomach upsets. Make sure all wrapping paper is tidied away.



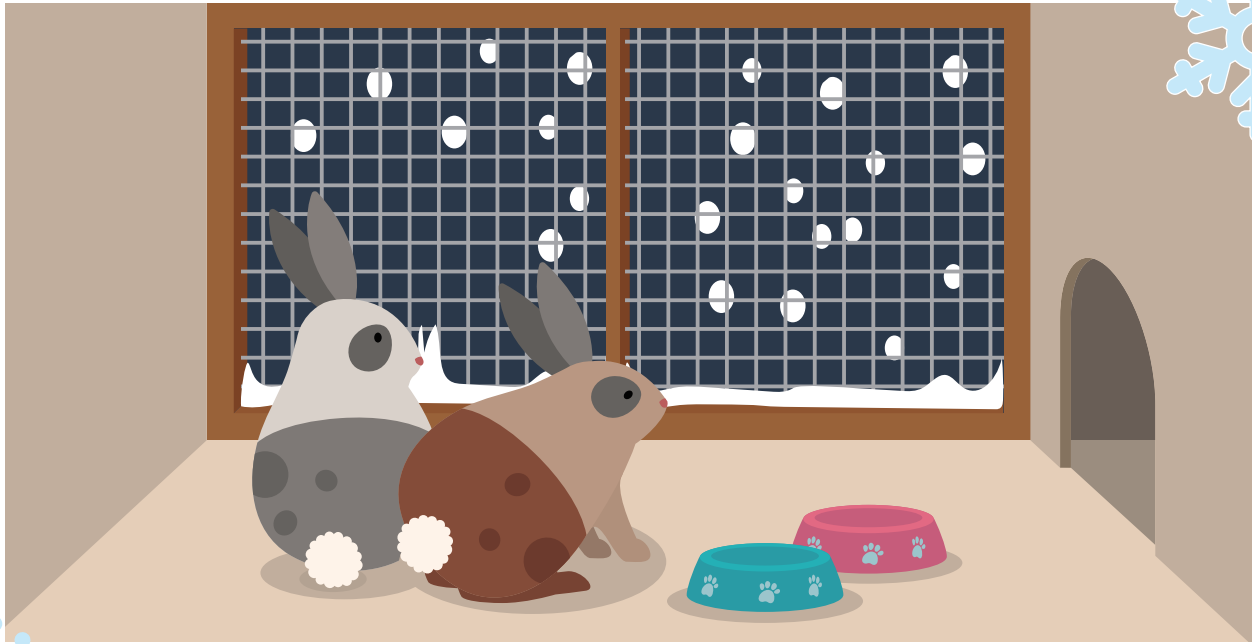
Festive fun

Christmas is a fun-filled but busy time. Don't forget to make time for your pets and make sure all pets have a quiet place to go and time to rest.



*Sponsored by Oggi's Oven: Baking mixes for healthy pet treats. oggisoven.co.uk

Draw all of the things these rabbits need in their hutch to keep them healthy and happy at Christmas.



Answers: Bedding to stay warm, toys to chew on, food and fresh water.

Circle the items in the picture that could be dangerous for our pets at Christmas.



Answers: Wrapping paper, tinsel, poinsettia, Christmas tree, Christmas lights, Christmas pudding and mince pies, candles, decorations on the Christmas tree and cold weather.

Merry Christmas to you and your pets!

For more information on our free education programme and resources visit: bluecross.org.uk or email: education@bluecross.org.uk



Pets change lives
We change theirs